

SPECIAL NOTICE: SLING STRAP ASSEMBLY

Remington NYLON 66, NYLON 76, NYLON 10, NYLON 11 and NYLON 12 Rifles

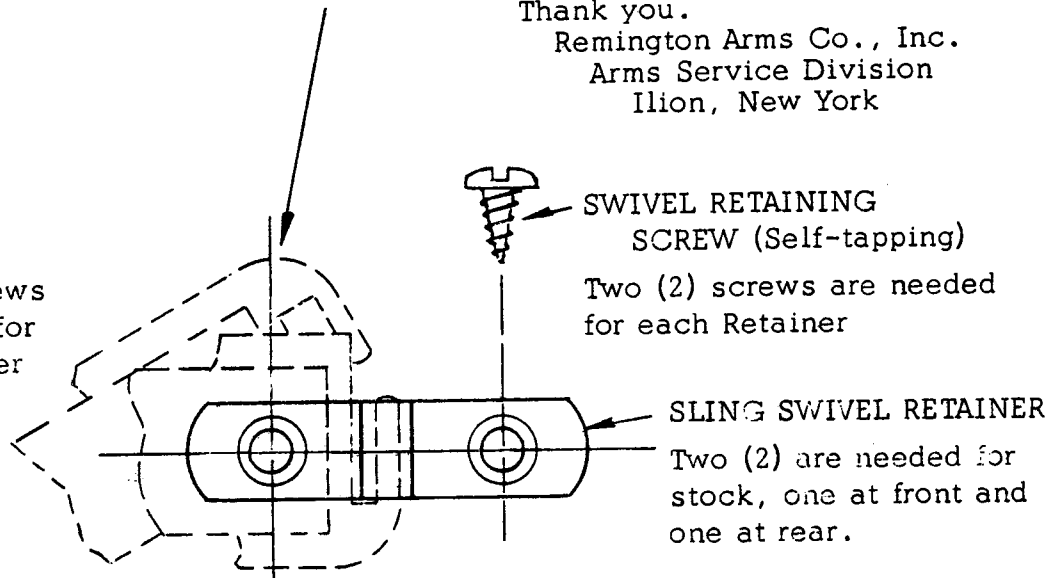
Instructions for fitting Sling Swivel Retainer (Part No. 15050) to front and rear of your nylon stock are diagramed below. Diagrams or patterns are to approximate scale and can be cut along dotted lines to use as actual overlays on stock for drilling operations. Swivel Retaining Screw (Part No. 15055) is self-tapping and can be threaded directly into drilled hole in stock.

**IMPORTANT:** Locate center line of diagrams centrally to bottom striation lines in stock. After assembly of retainers, the nylon Sling Strap Assembly (Part No. 25886) can be attached by sliding open swivels at end of strap.

Thank you.

Remington Arms Co., Inc.  
Arms Service Division  
Ilion, New York

Two (2) screws are needed for each Retainer



SWIVEL RETAINING SCREW (Self-tapping)

Two (2) screws are needed for each Retainer

SLING SWIVEL RETAINER

Two (2) are needed for stock, one at front and one at rear.

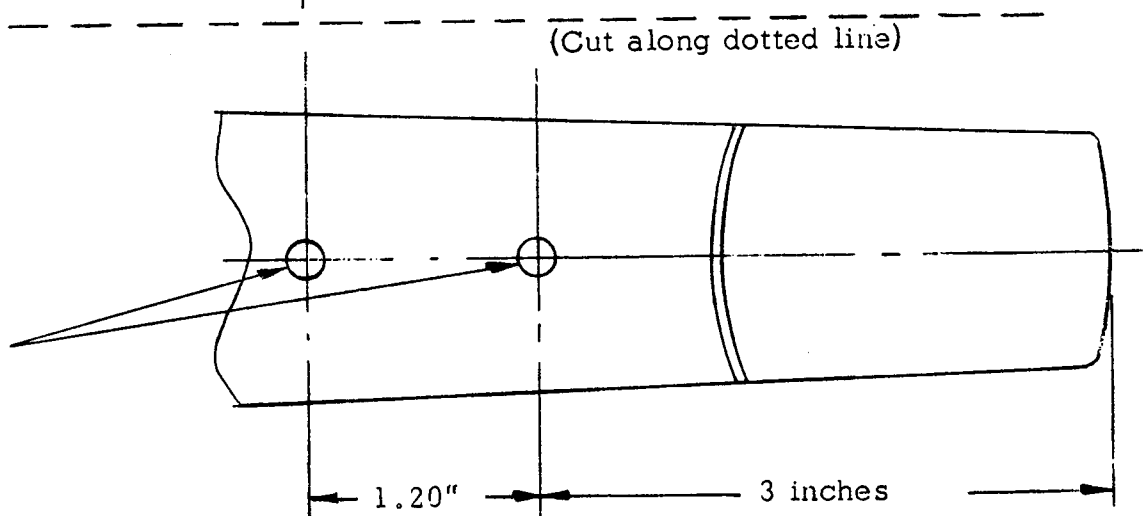
(Cut along dotted line)

NYLON 10, 11 & 12

STOCK  
(Front End)

Use No. 19 drill  
(.1660 dia.)

Drill two (2) holes  
in stock as shown.



1.20"

3 inches

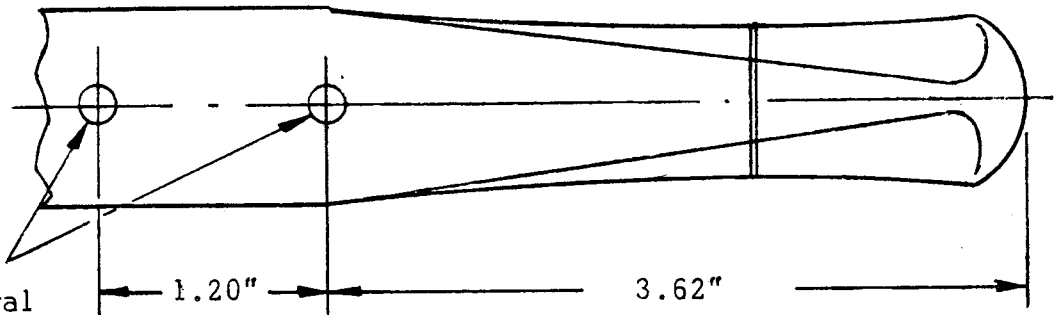
NYLON 66 & 76

(Cut along dotted line)

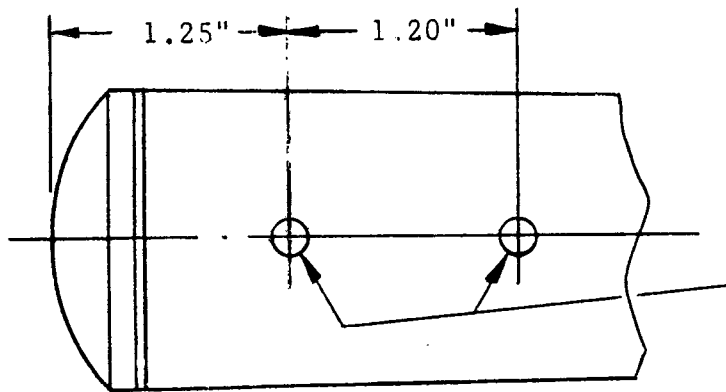
STOCK  
(Front End)

Use No. 19 drill  
(.1660 dia.)  
Drill two (2) holes thru  
stock as dimensioned.

Important Locate central  
on bottom radius of stock.



(Cut along dotted line)



STOCK  
(Rear End)

Use No. 19 drill  
(.1660 dia.)  
Drill two (2) holes thru  
stock as dimensioned.

Important Locate central  
on bottom radius of stock.